

**THE
SIX
FINGERS**

Nº1

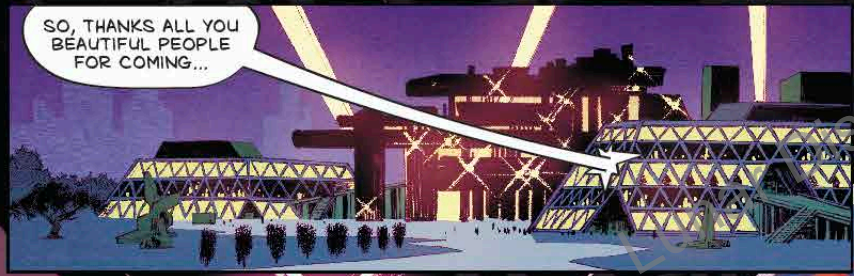
Image

\$3.99 US

**DAN WATERS
SUMIT KUMAR
LEE LOUGHNIDGE
ANITYA BUDIKAN
TOM MULLER**



SO, THANKS ALL YOU BEAUTIFUL PEOPLE FOR COMING...



AND REMEMBER, IF YOU FIND ANY OF THE WORKS ON DISPLAY GROTESQUE...OR GROTESQUELY AROUSING...



IT'S BECAUSE YOU'RE MADE OF THE EXACT SAME STUFF.



EACH AND EVERY ONE OF US IN THE ROOM IS A GHOST PILOTING A MEAT ROBOT WHICH DEFINES PRETTY MUCH EVERYTHING WE DO.



AND THAT'S LIFE, BABY.

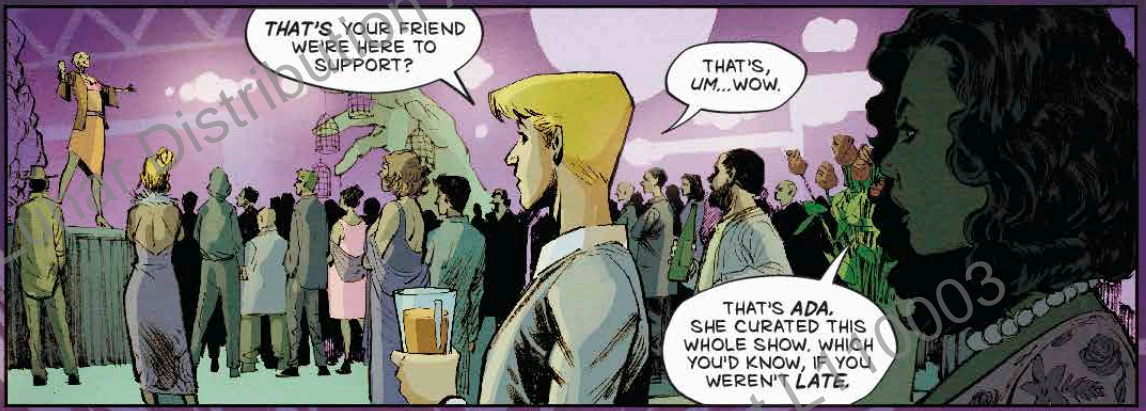


THAT'S ART.



ENJOY THE LIFE, ENJOY THE ART, MOST IMPORTANTLY, ENJOY THE FREE BOOZE!





THAT'S YOUR FRIEND WE'RE HERE TO SUPPORT?

THAT'S, UM...WOW.

THAT'S ADA. SHE CURATED THIS WHOLE SHOW, WHICH YOU'D KNOW, IF YOU WEREN'T LATE.



WHAT HAPPENED WITH YOUR FUNDING PITCH?



THEY OFFERED ME A GRANT TO STAY IN NEO NOVENA AND WORK ON A PART OF PROFESSOR DRAKE'S PREINDUSTRIAL PROJECT, LOOKING AT 21ST CENTURY SOIL ROTATION.



THAT'S... GOOD, ISN'T IT?

I NEED OUT OF THIS HOLE CITY.

I TOLD THEM TO GO THEMSELVES.



FIGURATIVELY, JOHANNES. PLEASE TELL ME YOU MEAN FIGURATIVELY?

HEY, WHAT DO YOU THINK THIS ONE IS MEANT TO BE ABOUT?



...FEELS
FAMILIAR
SOMEHOW

JOHANNES, WHAT IS *WRONG*
WITH YOU? YOUR PROFESSORS
WANT TO *FAST TRACK* YOU,
BUT YOU WON'T LET
THEM *HELP*

MAYBE IT'S
SUPPOSED
TO FEEL
FAMILIAR.

MAYBE
IT'S MEANT
TO TAP INTO
SOME PRIMAL
PART OF
THE BRAIN...

YOU'D RATHER CHASE A THEORY YOU
MADE UP AS A KID ABOUT YOUR DAD'S
ARROW, WHILE CARTING BATTERIES
AROUND THE POWER PLANT FOR
FIFTEEN BUCKS AN HOUR.

I *LIKE* THAT
JOB. I CAN DO
IT ON AUTOMATIC.
GIVES ME TIME
TO *THINK*.

BESIDES,
I KINDA DON'T
HAVE IT ANYMORE.

YOU LOST
YOUR *JOB*,
TOO?

YEAH.
I'M SORRY,
DON'T WORRY
ABOUT ME.
I'M OKAY. DO
THE THING YOU
NEED TO DO.

WHAT ARE
YOU TALKING
ABOUT?



WELL, YOU HAVEN'T BEEN STAYING OVER LATELY, LIKE, AT ALL.

AND TONIGHT, YOU WANTED TO MEET IN A PLACE THIS PUBLIC...



...NOT REALLY EITHER OF OURS KINDA THING--NEUTRAL GROUND.

SO NEITHER OF US CAN CAUSE A SCENE.



YOU BROUGHT ME HERE TO **BREAK UP** WITH ME, RIGHT?



YOU ASSHOLE.